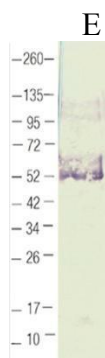




# Anti-Human ST2

---

Product Name	Anti-Human ST2
Catalog No	IT-010-003
Source	Rabbit Polyclonal Antibody
Formulation	Each vial contains 200 µg purified IgG in 100 µl PBS with less than 0.1% gelatin and 0.1% sodium Azide.
Immunogen	Human ST2 protein (Genebank accession # <a href="#">NP003847</a> ). ST2 is member of interleukin-1 family. The level of sST2 in serum is indicative of acute heart failure.
Applications	Western Blotting (1:200-1:1000), ELISA, etc.
Specificity	Reacts with Human ST2 protein.
Storage	Keep it at 4°C if used within a month. For long term storage, split it into small aliquots and keep at -80°C. Avoid repeated freezing and thawing. The product will be expired one year after receiving if stored properly. Non-hazardous. No MSDS required.
Use Limitation	For research use only, not for use in diagnostic procedures.



E: Human ST2 protein

Note: